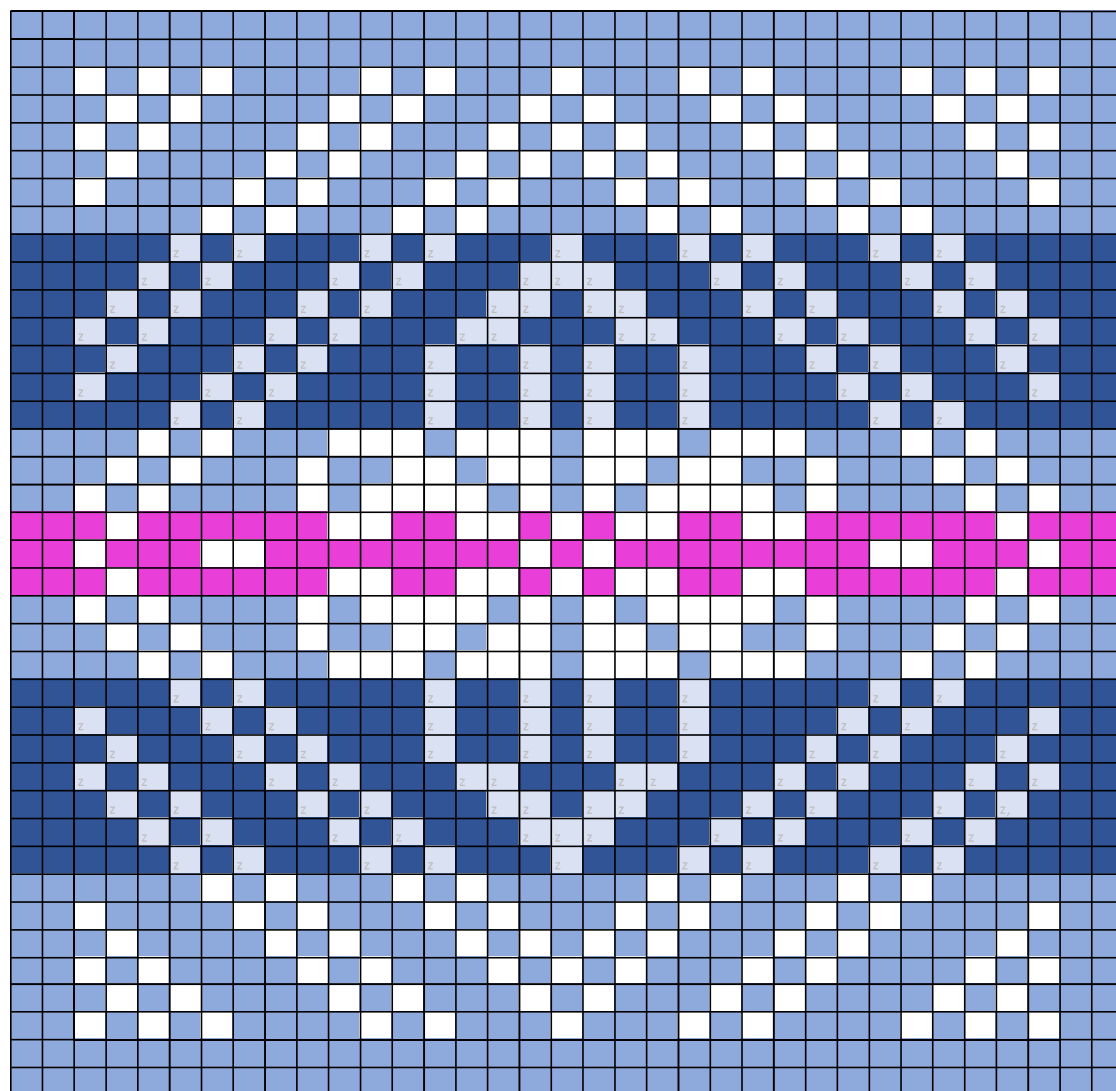


Repair Swatch



Row	Pattern	Background
39		C
38		C
37	A	C
36	A	C
35	A	C
34	A	C
33	A	C
32	A	C
31	B	D
30	B	D
29	B	D
28	B	D
27	B	D
26	B	D
25	B	D
24	A	C
23	A	C
22	A	C
21	A	E
20	A	E
19	A	E
18	A	C
17	A	C
16	A	C
15	B	D
14	B	D
13	B	D
12	B	D
11	B	D
10	B	D
9	B	D
8	A	C
7	A	C
6	A	C
5	A	C
4	A	C
3	A	C
2		C
1		C

35 34 33 32 31 30 29 28 27 26 25 24 23 22 21 20 19 18 17 16 15 14 13 12 11 10 9 8 7 6 5 4 3 2 1

You will need

- US 3 needles
- Sharp scissors
- Five colors of Spindrift or J&S Jumper weight yarn--3 shades of one color plus white and a "pop" color
- Gauge 28 to 30 sts = 4 inches

Questions to: info@heritagespinning.com

Prior to Fair Isle Day Class

Knit one swatch as charted above using the colors of your choice. Work the swatch flat, cutting the yarn at the end of every row. There are no wrong side rows and all right side rows are knit (you are simulating knitting in the round).